



August 10, 2011

CONTACT: Marcia McAllister

T: 703-572-0506

C: 571-730-9117

marcia.mcallister@dullesmetro.com

Lane Shifts of Eastbound Leesburg Pike (Route 7) at Dulles Toll Road Interchange Friday Night, Aug. 12, Through May 2012

Drivers using eastbound Route 7 at the Dulles Toll Road (Route 267) interchange will experience a significant shift of the east bound lanes starting overnight Friday night, Aug. 12.

Dulles Corridor Metrorail Project construction crews have scheduled a shift of the eastbound Route 7 lanes to the left between the bridge over the toll road and Dulles International Airport Access Highway lanes and the Tyco Road/Westwood Center Drive intersection.

The shift will start immediately east of the bridge. The two thru lanes will shift toward the median for about a 700-foot distance then shift back to the right before Tyco Road/Westwood Center Drive (*see map*).

The new traffic pattern will be in place through May 2012.

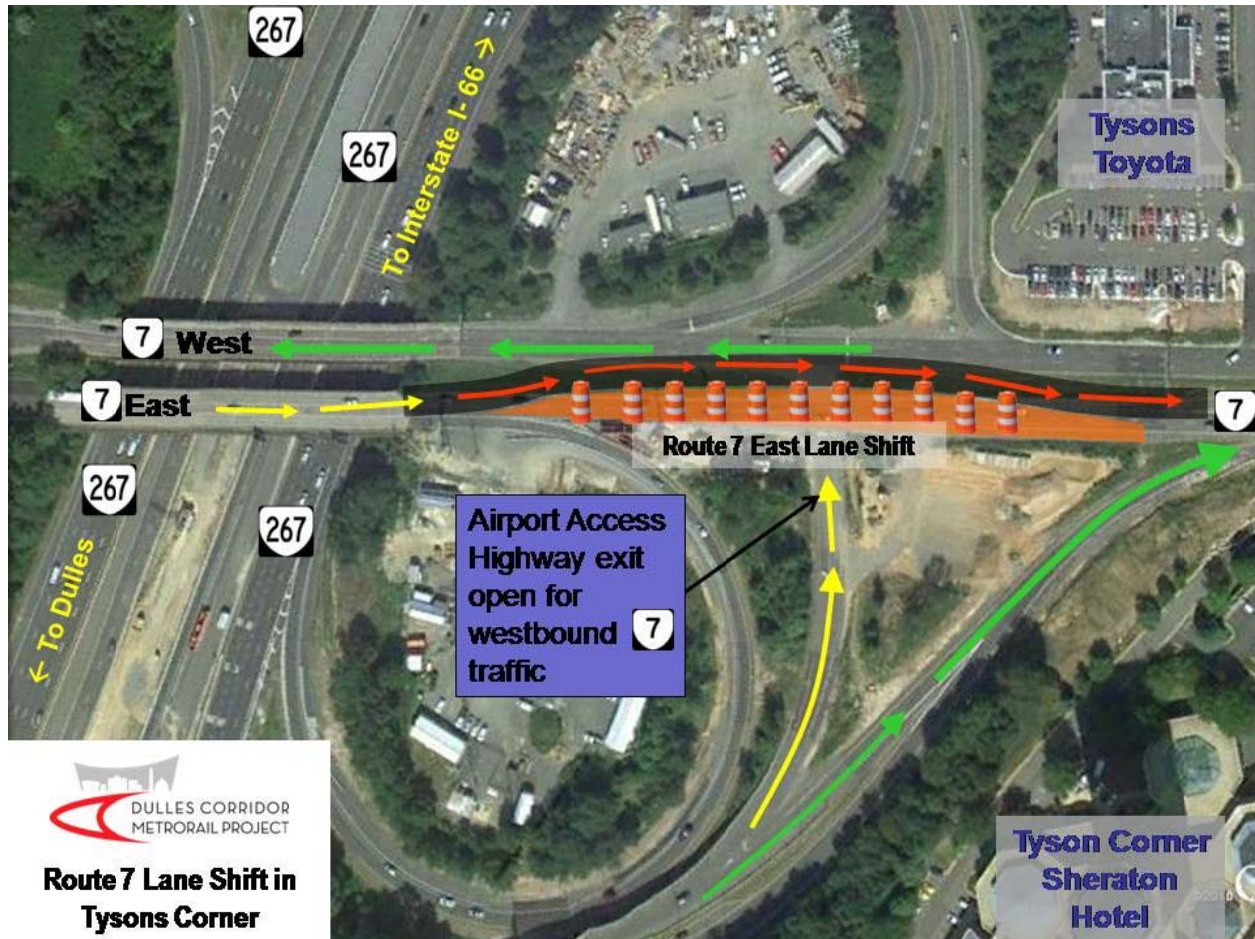
Traffic exiting from the eastbound Airport Access Highway (DIAAH) will continue to use the existing westbound or eastbound ramps on to Route 7. However, motorists should expect the ramp to westbound Route 7 to be narrowed to one lane.

Note: Tysons Connector buses using this ramp to turn right and access eastbound Route 7 to Tyco Road will still be able to use this ramp.

The lane shift creates space for the construction of a concrete structure called a “straddle bent” that will straddle two piers over eastbound Route 7 to support the rail line. This is part of the bridge flyover that will carry tracks between Route 7 and the airport highway median.

Motorists are urged to use extreme caution, and pay attention to signage when traveling through this area. Police will be on site. All work is weather-dependent and subject to change.

SEE MAP BELOW




**Route 7 Lane Shift in
Tysons Corner**

A 24/7 emergency hotline is available for construction-related issues: 877-585-6789.
For general project information: www.dullesmetro.com or 703-572-0506.